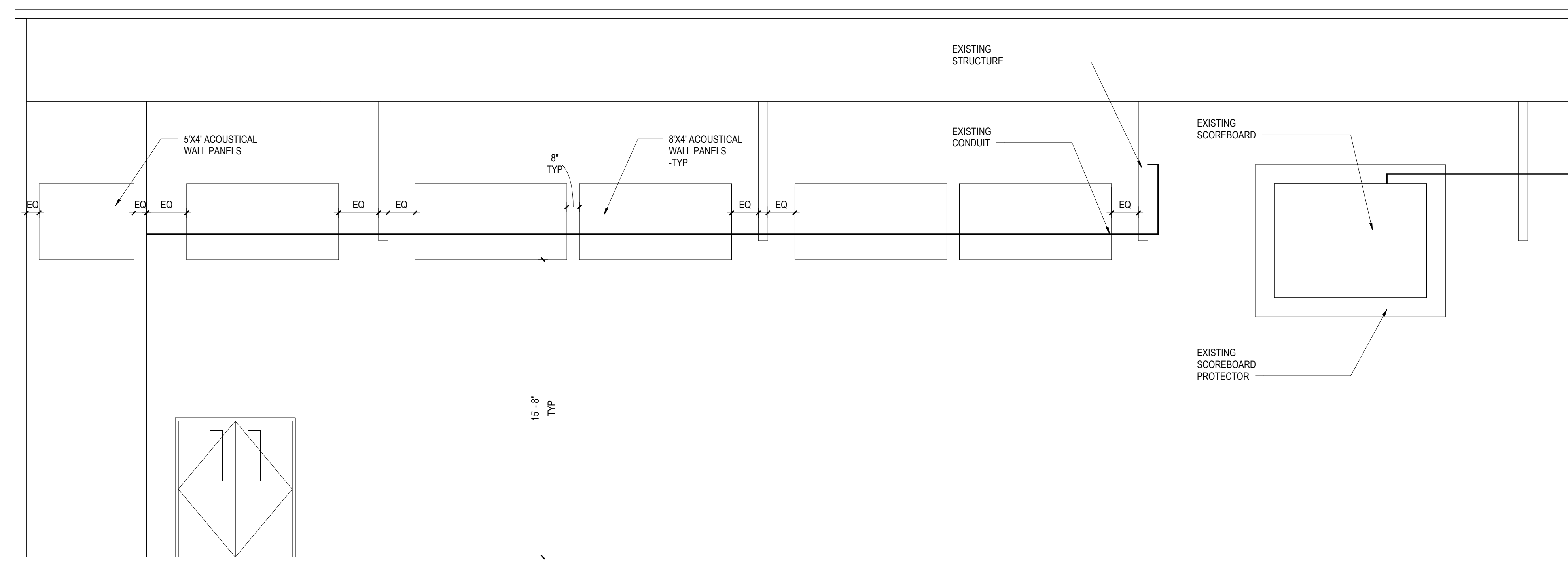
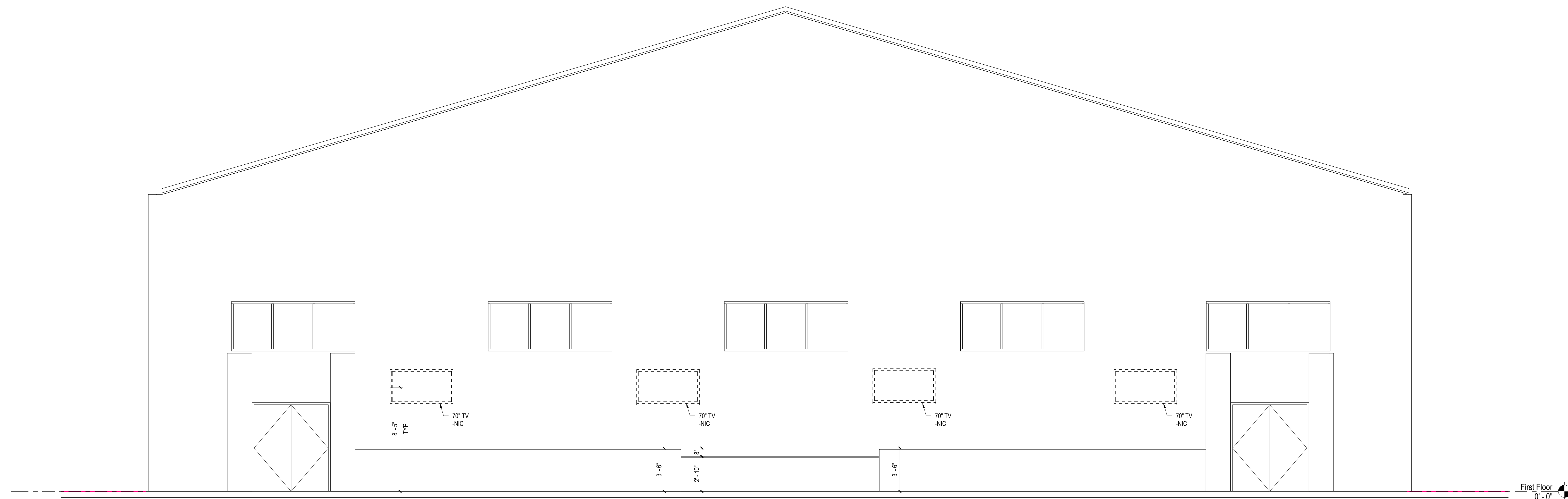


1 INTERIOR ELEVATION  
A2.2 1/4" = 1'-0"



2 INTERIOR ELEVATION  
A2.2 1/4" = 1'-0"



3 CAFETERIA - ELEV 3  
A2.2 1/4" = 1'-0"

BUILT-IN SIMULATED  
STONE COUNTERTOP W/  
CONCEALED BRACKETS.  
FOOTREST @ 42H

BUILT-IN SIMULATED  
STONE COUNTERTOP W/  
CONCEALED BRACKETS.  
FOOTREST @ 42H

BUILT-IN SIMULATED  
STONE COUNTERTOP W/  
CONCEALED BRACKETS.  
FOOTREST @ 42H

ALL REPORTS, PLANS, SPECIFICATIONS AND COMPUTER FILES RELATING TO THIS PROJECT ARE THE PROPERTY OF CRABTREE, ROHRBAUGH & ASSOCIATES. CRABTREE ROHRBAUGH & ASSOCIATES RESERVES ALL COMMON LAW, STATUTORY AND OTHER RIGHTS AND WILL ENFORCE THE COPYRIGHT IN THESE REPRODUCTIONS. CRABTREE, ROHRBAUGH & ASSOCIATES WILL BE SUBJECT TO LOCAL JURISDICTION OF THE UNITED STATES AND WILL BE SUBJECT TO LOCAL PROSECUTION. © CRABTREE, ROHRBAUGH & ASSOCIATES, INC. 2018

REVISIONS		
NO.	DATE	DESCRIPTION OF CHANGES

**CRABTREE ROHRBAUGH & ASSOCIATES - ARCHITECTS**  
 401 EAST WINDING HILL ROAD  
 MECHANICSBURG PA 17055  
 717-458-0272

TOWSON, MARYLAND  
 CHARLOTTEVILLE, VIRGINIA  
 WHITE SULPHUR SPRINGS, WEST VIRGINIA

RENOVATIONS TO  
**BIG SPRING MIDDLE SCHOOL**  
 BIG SPRING SCHOOL DISTRICT  
 43 MOUNT ROCK ROAD, NEWVILLE PA 17241

INTERIOR ELEVATIONS  
 PROJECT 3196.2  
 SCALE 1/4" = 1'-0"  
 FILENAME:  
 DATE: JANUARY 7, 2019

**A2.2**